

RIDE



S1PS EN ISO 20345: 2022 S1PS SR FO CI HI

STANDARD VERSION **2022**



■ **8834 BLACK** | 35 ▶ 48



■ **8836 RED**



■ **8832 BLUE**

COMPOSITION

Upper	Shield one
Front reinforcement	TPU
Lining	3D mesh
Toe cap	Composite
Insole	Mesh over PU foam. Removable.
Anti-puncture sole	Fabric
Sole	Two-density polyurethane
Weight size 42*	535 g * Weight per shoe

★ ★

Coefficient obtained size 42	front		heel	
	Standard	Parade	Standard	Parade
Ceramic (soap solution)	0,36	0,36	0,31	0,35
SR Ceramic + Glycerine	0,22	0,24	0,19	0,28

PRODUCT EXTRAS



Insulated sole (cold)



Insulated sole (heat)



Non-magnetic



Breathable

PARADE TECHNOLOGIES



Supports the arch of the foot



Shock wave dissipation

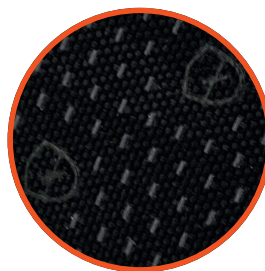


Scuff-resistant shield



Extra-flexible sole

- **SHIELD ONE ABRASION PROTECTION**
- **FABRIC + PU RESISTANT TO 16,000 ABRASION CYCLES**
- **BE-FLEX FLEXIBLE SOLE**



SAFETY TABLE



Toe protection (safety toe cap)



Slip resistance
Ceramic floors + detergent



Energy-absorbing heel



Anti-static



Puncture-resistance
Non-metallic insert
SP = small point 3 mm



Slip resistance
(ceramic floor + oil)



Hydrocarbon-resistant



Sole insulation (cold)



Sole insulation (heat)



Non-magnetic

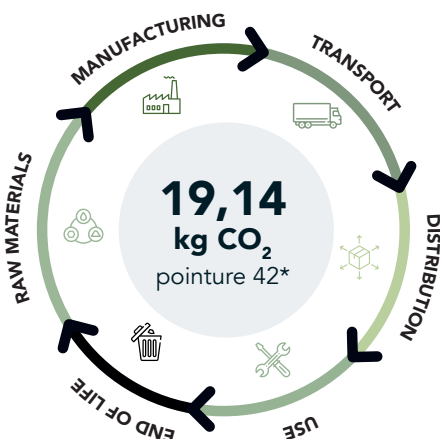
ENVIRONMENTAL FEATURES

At Parade, we carry out a life cycle analysis to measure the environmental impact of each of our models: from the extraction of raw materials, manufacturing, use, logistics, right through to the end of the product's life. Our environmental impact calculators, developed in-house using ADEME's EMPREINTE® database, have been certified by AFNOR for textiles and validated by the Pôle Eco-conception* for footwear.

* The Pôle Eco-conception is the French national centre for eco-design and life-cycle performance. Its expertise is recognised nationally and internationally by ADEME, the French Ministry of the Environment, AFNOR, ISO and the UN-environment.

CARBON FOOTPRINT

in kg CO₂ equivalent*

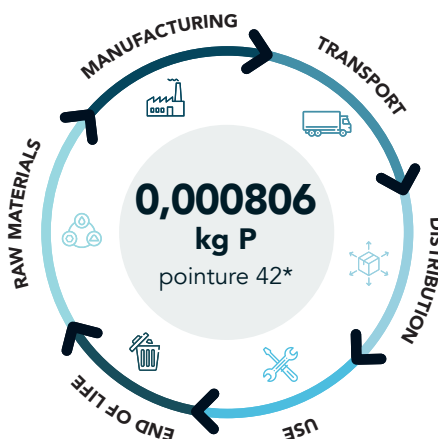


RAW MATERIALS	60 %
Raw materials: contribution to the carbon footprint as a %	
MANUFACTURING	22 %
Manufacturing: contribution to the carbon footprint as a %	
TRANSPORT	7 %
Transport: contribution to the carbon footprint as a %	
DISTRIBUTION	6 %
Distribution: contribution to the carbon footprint as a %	
USE	0 %
Use: contribution to the carbon footprint as a %	
END OF LIFE	5 %
End-of-life: contribution to the carbon footprint as a %	

* Based on a size 37 for women and a size 42 for men and unisex.

WATER POLLUTION

in kg Phosphate equivalent*



RAW MATERIALS	99 %
Raw materials: contribution to water pollution as a %	
MANUFACTURING	0 %
Manufacturing: contribution to water pollution as a %	
TRANSPORT	0 %
Transport: contribution to water pollution as a %	
DISTRIBUTION	0 %
Distribution: contribution to water pollution as a %	
USE	0 %
Use: contribution to water pollution as a %	
END OF LIFE	1 %
End of life: contribution to water pollution as a %	

► Packaging containing **at least 70%** recycled materials



► Stitching country: **China** / Assembly country: **China** / Finishing country: **China**

EXTRAS EXTRAS



- DRS SYSTEM 2 technology for shock wave dissipation
- BE-FLEX 2.0 technology for a flexible sole and maximum comfort
- VPS SYSTEM technology: supports the arch of the foot
- Exclusive SHIELD-ONE material fabric + ultra-resistant PU (meets abrasion-resistance requirements imposed by the EN388 glove standard - performance level 4/4)
- Ultra-breathable 3D MESH